

Let's Learn About ABLE Accounts (Achieving a Better Life Experience)



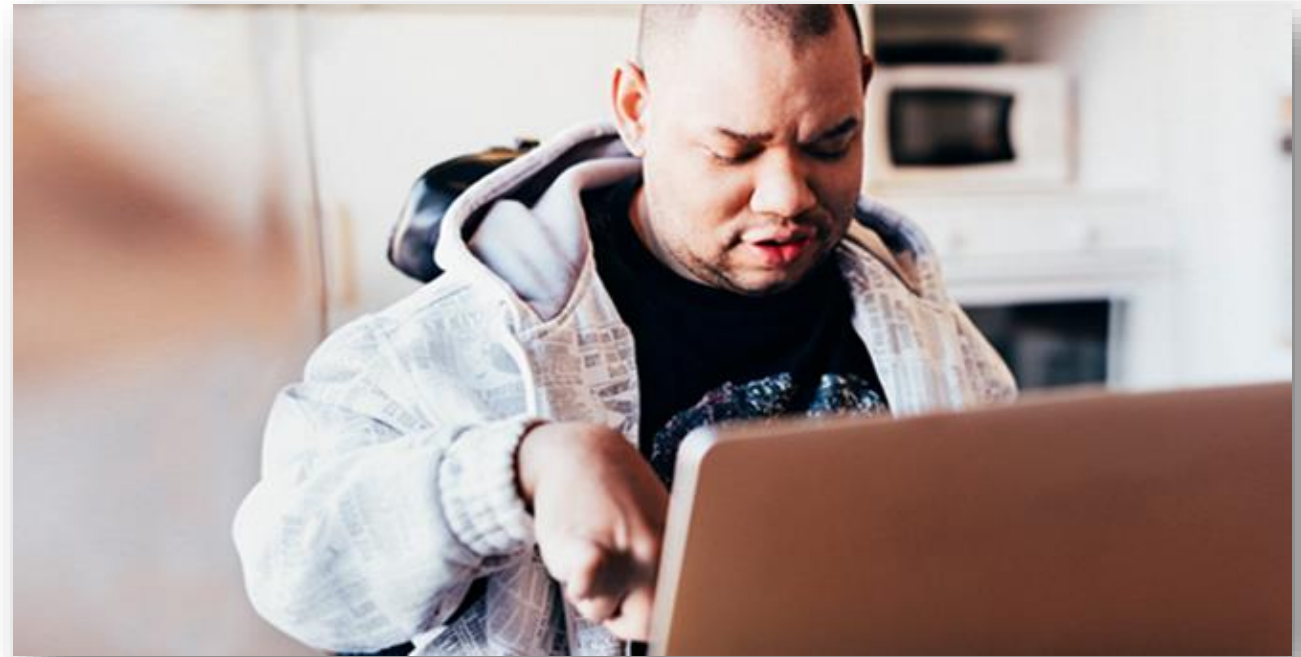
1. What is an ABLE Account?

A = Achieving

B = Better

L = Life

E = Experience



2. Do I Qualify for an Illinois ABLE Account?



- **When did my disability start?**
- **Qualify for SSI, SSDI, Medicaid?**



3. Who Can Open My ABLE Account?

Account Owner: Can I open it for myself?

Authorized Individual: Open an account for someone else



4. What can I put into my ABLE account?

- **My paycheck!**
- **Money that I receive from others**
- **Money given by parents, family and friends**



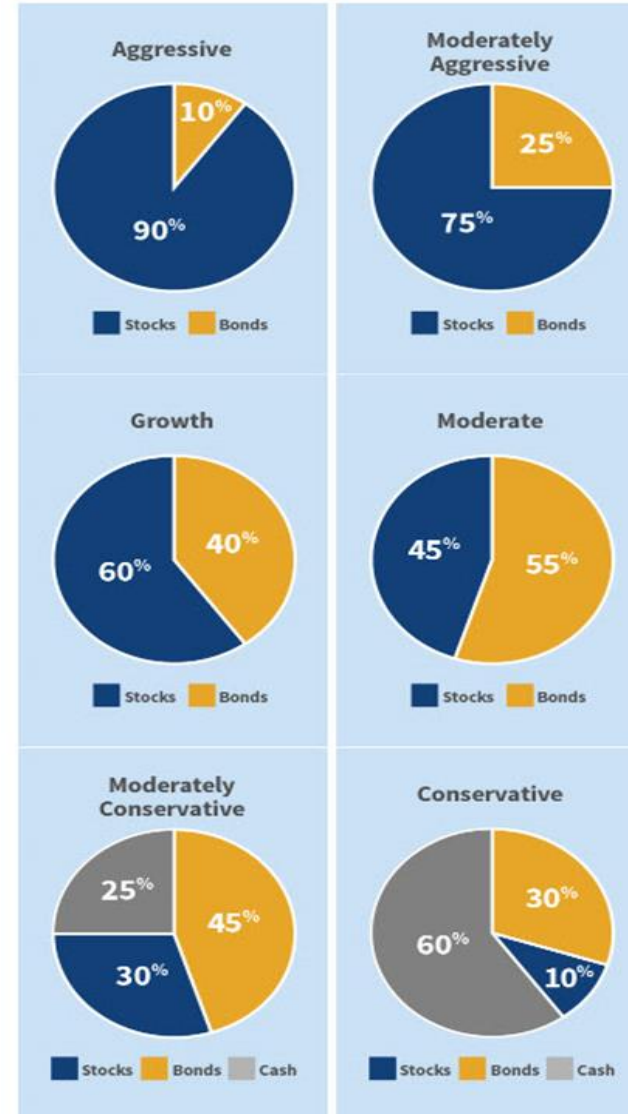
What ideas do you have?



5. What investment options does IL ABLE offer?

Investing can be confusing
We made it easy!

BLACKROCK



6. What about a checking account?



FIFTH THIRD BANK



7. What Can I use my ABLE funds for?

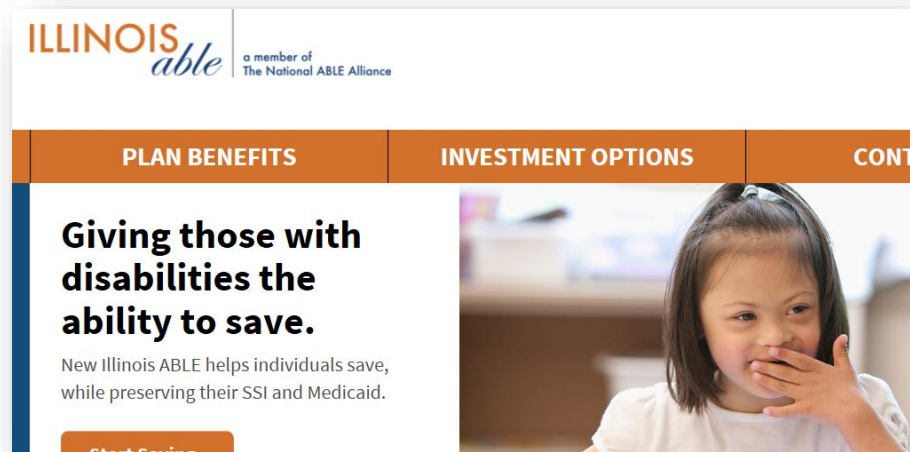
- Pay for a job coach or tutor
- Pay for a trip
- Buy things I need
- Get around town
- Pay my rent
- Pay for a personal helper
- Take a class
- Pay for the doctor, dentist or medicine

What other ideas do you have?



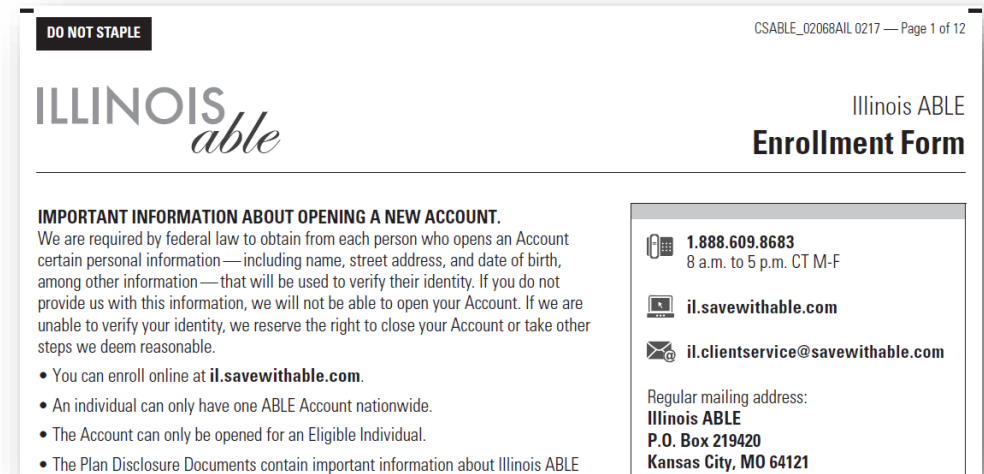
8. Where do I go to open an Illinois ABLE account?

il.savewithable.com



The screenshot shows the Illinois ABLE website. At the top left is the logo "ILLINOIS able" with the tagline "a member of The National ABLE Alliance". Below the logo are three navigation tabs: "PLAN BENEFITS", "INVESTMENT OPTIONS", and "CONTACT". The main content area features a headline: "Giving those with disabilities the ability to save." followed by a sub-headline: "New Illinois ABLE helps individuals save, while preserving their SSI and Medicaid." To the right of the text is a photograph of a young girl with her hand near her mouth. At the bottom left, there is a "Start Service" button.

Enroll Online



The screenshot shows the "Illinois ABLE Enrollment Form". At the top left, it says "DO NOT STAPLE". At the top right, it says "CSABLE_02068AIL 0217 — Page 1 of 12". The logo "ILLINOIS able" is on the left, and "Illinois ABLE Enrollment Form" is on the right. The main text reads: "IMPORTANT INFORMATION ABOUT OPENING A NEW ACCOUNT. We are required by federal law to obtain from each person who opens an Account certain personal information—including name, street address, and date of birth, among other information—that will be used to verify their identity. If you do not provide us with this information, we will not be able to open your Account. If we are unable to verify your identity, we reserve the right to close your Account or take other steps we deem reasonable." Below this is a bulleted list of conditions for enrollment. On the right side, there is a box containing contact information: a phone number "1.888.609.8683" (8 a.m. to 5 p.m. CT M-F), the website "il.savewithable.com", and the email "il.clientservice@savewithable.com". At the bottom right, the "Regular mailing address" is listed as "Illinois ABLE, P.O. Box 219420, Kansas City, MO 64121".

**Download, print form
and mail in**

or Call Illinois ABLE at 888-609-8683



Michael W. Frerichs
ILLINOIS STATE TREASURER

ILLINOIS able

a member of
The National ABLE Alliance

9. What's next for ABLE?

- **Contributions are deductible from your IL State income taxes.**
- **State Medicaid can't claw back in SOME circumstances.**
- **Easier to open IL ABLE Accounts as a parent of an adult.**
- **529 Rollover into ABLE.**
- **Contribute more if you work!**

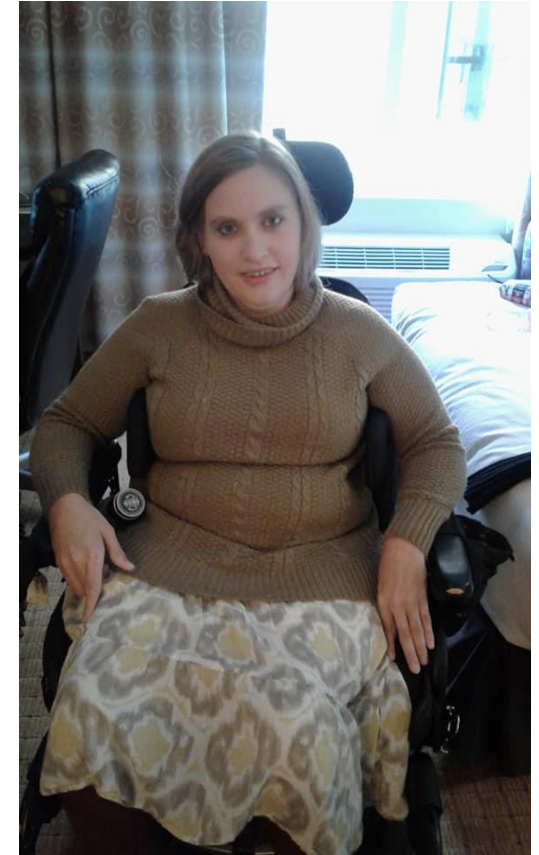
- **NOW – on to ABLE AGE ADJUSTMENT....stay tuned and help advocate.**



Illinois ABLE Account Owner: In Her Own Words

“Having an ABLE account now means financial security. My first goal is to use the money I am saving to purchase an accessible vehicle. Eventually, I would like to buy a house. I have a long way to go, but I am saving for it. I don’t know what I would do without ABLE! ”

- Young Adult with a disability living in Illinois



Questions about Illinois ABLE?

Visit: il.savewithABLE.com

Rosemary Laudani
Program Manager, IL ABLE
rlaudani@illinoistreasurer.gov
217-524-1778

JJ Hanley
Director, IL ABLE
jjhanley@illinoistreasurer.gov
312-814-2677

Sign Up for Access ABLE Newsletter

<https://form.jotform.com/81355587604968>

