

STRENGTHENING SOCIAL DETERMINANTS FOR HEALTH AND SUCCESS



OBJECTIVES FOR TODAY

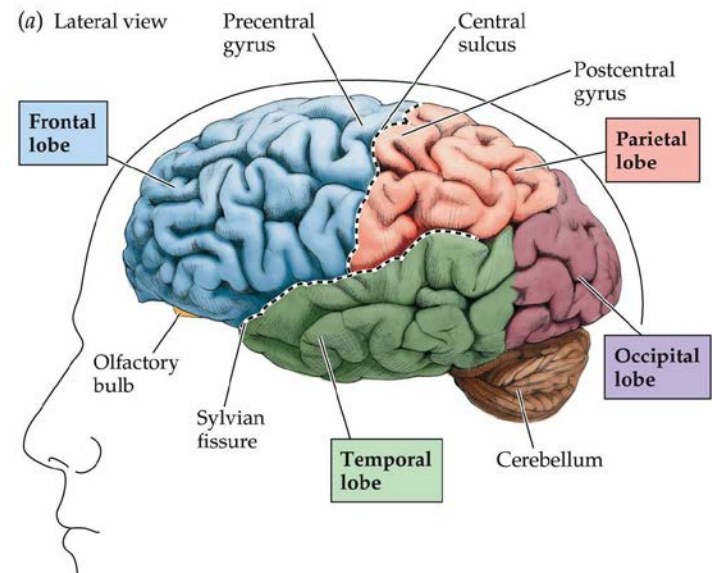
- ❑ Identify mental health **as** essential to overall health and well-being.
- ❑ Apply information on social determinants of health to everyday practices.
- ❑ Explain brain research illustrating neuroplasticity and capacity of lifelong learning in context of environment.
- ❑ Recognize specific social and health determinants shaped by environment and social context.
- ❑ Apply methods of empowering youth and young adults to increase self-efficacy and resiliency.



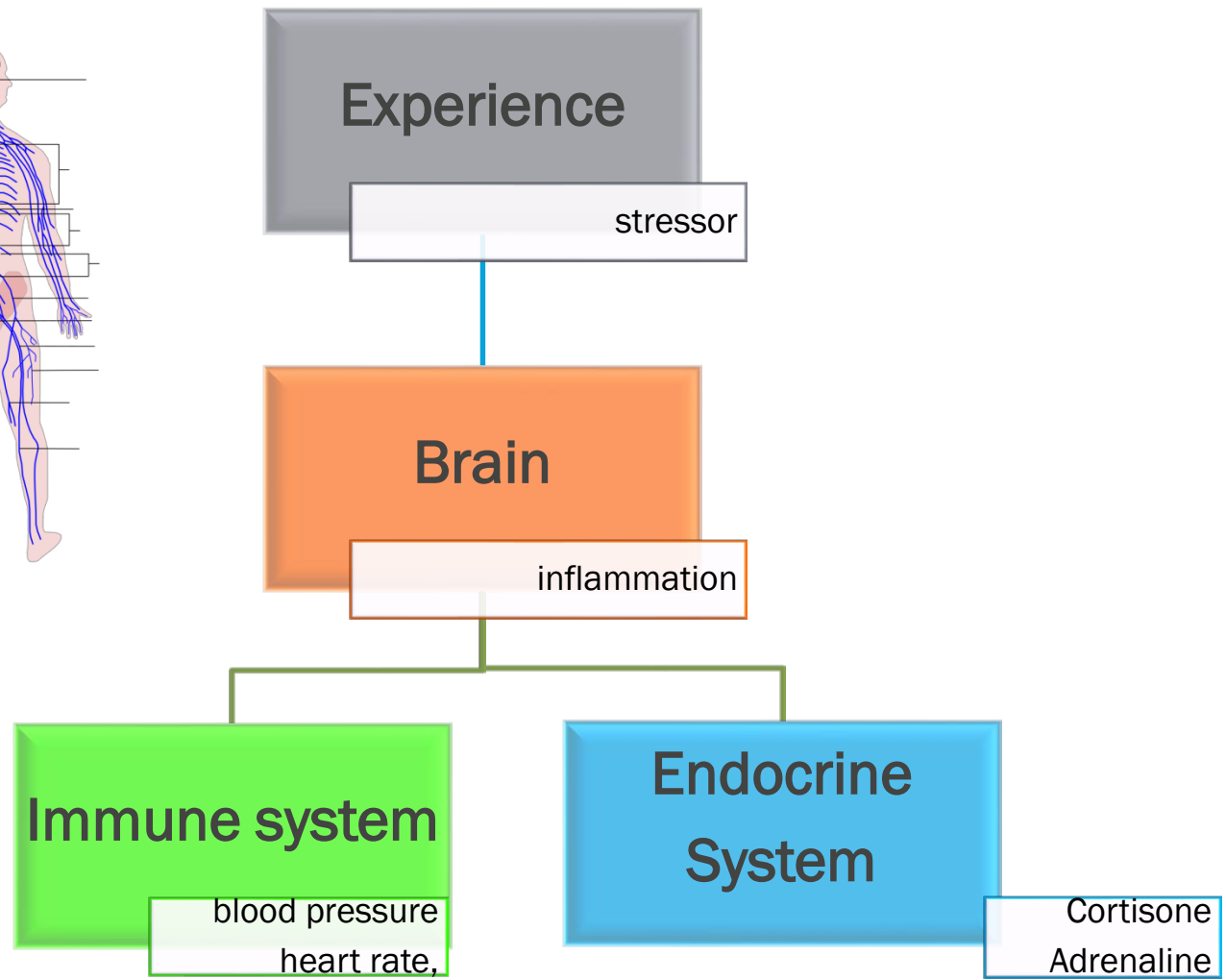
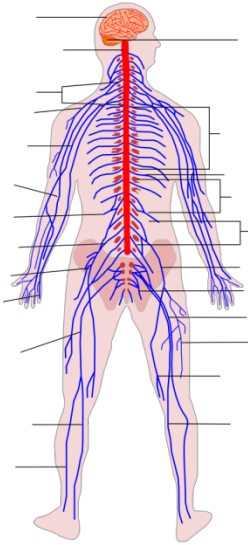
DISCLAIMER

I declare that neither I, nor my immediate family, have a financial interest or other relationship with any manufacturer/s of a commercial product/s or service/s which may be discussed at the conference.

CHANGES IN BRAIN AND BEHAVIOR can lead to vulnerability or resiliency



Biological Psychology 6e, Figure 2.12 (Part 1)



NEUROPLASTICITY - CHANGES IN THE BRAIN

❖ Chemical

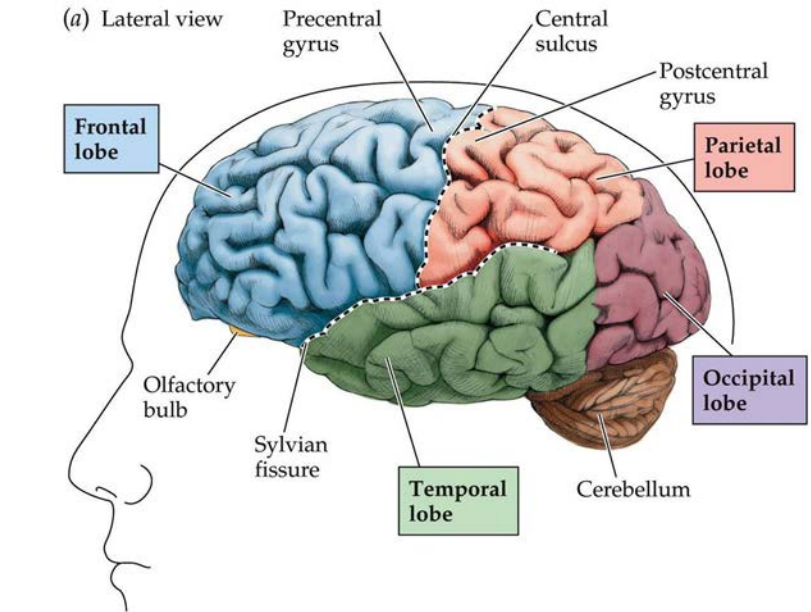
Rapid action/reaction
(short-term memory)

❖ Structural

Connections between neurons
(long-term memory)

❖ Function

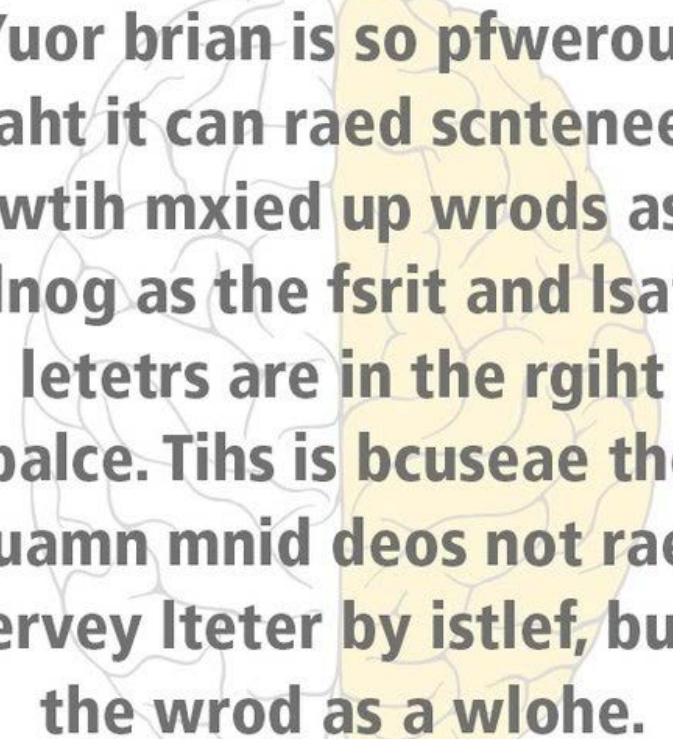
Excitability/repetition



Biological Psychology 6e, Figure 2.12 (Part 1)

MENTAL HEALTH CONTINUUM MODEL





**Yuor brian is so pfweroul,
taht it can raed scntenees
wtih mxied up wrods as
Inog as the fsrit and lsat
letetrs are in the rgiht
palce. Tihs is bcuseae the
huamn mnid deos not raed
ervey lteter by istlef, but
the wrod as a wlohe.**

DATA WALK

IMPORTANCE OF DATA TO INTERVENTIONS

1

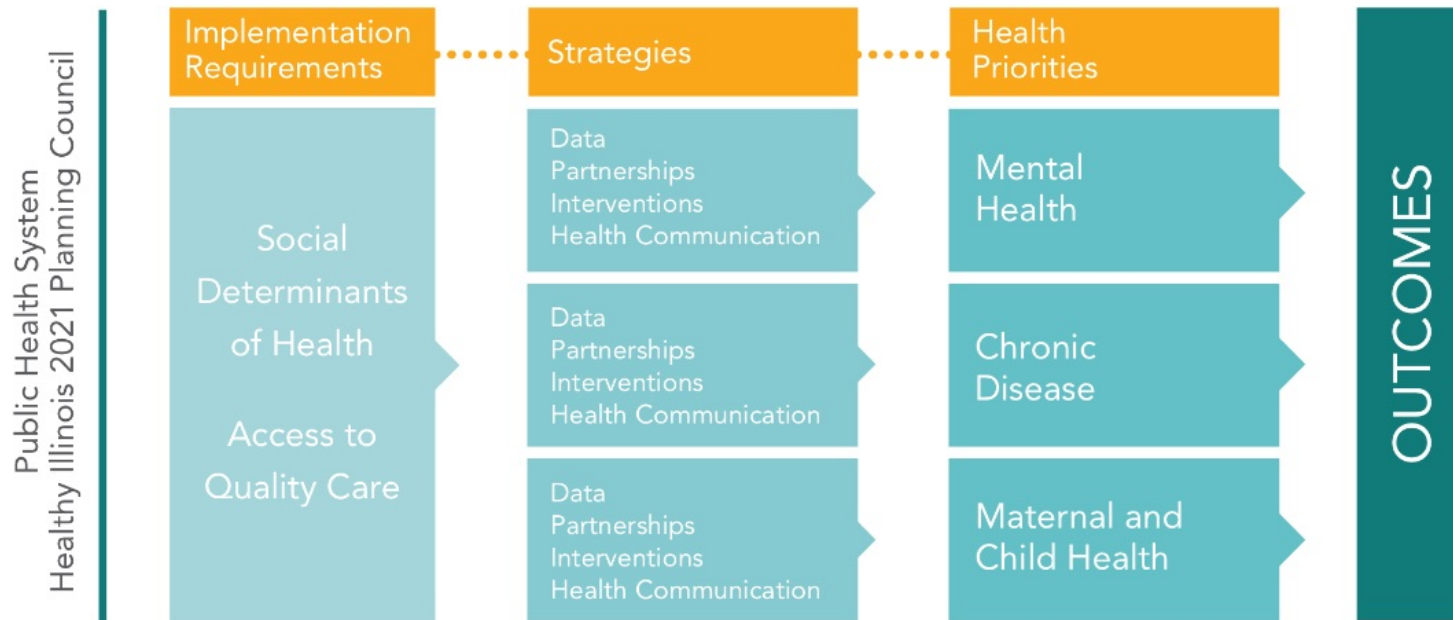
3

4

2



STATE HEALTH IMPROVEMENT PLAN FRAMEWORK





SPECIALIZED CARE FOR CHILDREN

UIC's Division of Specialized Care for Children (DSCC) partners with Illinois families and communities to help children and youth with special healthcare needs connect to services and resources.



(800) 322-3722



dsc@uic.edu



dsc.uic.edu



UIC Specialized Care for Children

ILLINOIS RECEIVES (FFP) FEDERAL FINANCIAL PARTICIPATION 5/7/18 PRESS RELEASE

Illinois.gov/hfs

1115 Waiver

(10 programs)

Substance use disorders and mental health care



[HTTPS://WWW.HEALTHYPEOPLE.GOV/](https://www.healthypeople.gov/)

